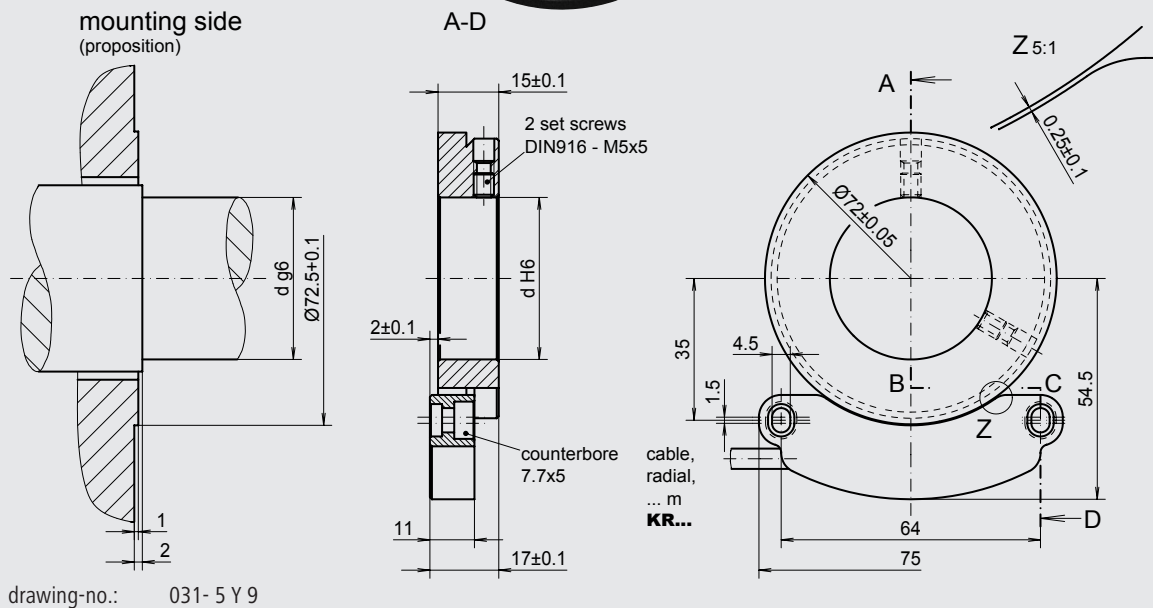


Incremental encoder with magnetic scanning



Features

- Low cost hollow shaft incremental encoder
- Without bearings
- Rotor fastening about 2 set screws
- HTL- output signals
- Cable outlet radial



Mechanical data

| | | |
|------------------------------|--|--|
| Design | A 4 | A 4 |
| Housing | plastics | |
| Protection | IP 66 | (referenced to sealed-in electronic) according to DIN EN 60 529 |
| Construction principle | pole ring with magnetic scanning | |
| max. revolution (mechanical) | $n_{\max} \leq 8000 \text{ min}^{-1}$ | |
| Permissible motor-shaft play | axial $\leq 1.0 \text{ mm}$ radial $\leq 0.05 \text{ mm}$ | |
| Vibration | 55... 2000 Hz $\leq 100 \text{ m/s}^2$ | according to DIN IEC 60 068, part 2 - 6 |
| Shock | 11 ms $\leq 1000 \text{ m/s}^2$ | according to DIN IEC 60 068, part 2 - 27 |
| Hollow shaft diameter | d 40 mm | (standard), 10 mm to 45 mm possible |
| Weight | approx. 180 g | 40 |

Electrical data

| | | |
|-------------------------------------|--|------|
| Number of pulses | Z 20, 50 pulses/rev. | XXXX |
| Electronic version (output signals) | HTL Push pull-output stage (short-circuit proof), supply voltage: $U_B = 8 - 26$ VDC (polarity protected), output amplitude: $U_{LOW} \leq 1.5$ V, $U_{HIGH} \geq U_B - 3$ V | H |
| Output signals | A 1 square wave pulse train | AX |
| Output load current | $I_{load} \leq 20$ mA | |
| Current consumption (no load) | $I_{max} \leq 20$ mA | |
| Permissible cable length | ≤ 15 m (Baumer Thalheim cable) | |
| Type of connection | cable, radial, 1.0 m (standard length) | KR1 |
| Operating temperature range | -20 °C to +85 °C | S |
| Permissible relative humidity | ≤ 90 % | |

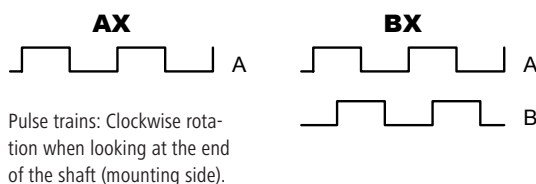
Options

| | | |
|--------------------------------|--|--------|
| Output signals | A, B 2 square wave pulse trains, electr. phase shifted $90^\circ \pm 30^\circ$ | BX |
| Coupling K10SK4 at cable ... m | Coupling type 10, pin contacts, extruded at cable, ... m, 4-poles | K10SK4 |

Connection table

| wire color | signals |
|-------------|-------------------|
| green | A |
| grey | B |
| brown | + U_B |
| white | 0 V |
| transparent | shielding/housing |

Output signal diagram



Ordering example:

| | | | | | | | | | | |
|-------------------------------|---------------|--|--|--|---------------------------|--|---|--------------------------------|--------------------|------------------------|
| ITD 67 | A 4 | Y 9 | 20 | H | AX | KR1 | S | 40 | IP66 | |
| Incremental encoder ITD 67 | Design A 4 | Mechanical variant <i>Y 9 = look at the drawing</i> | Number of pulses 20 pulses/revolution | Electronic version $U_B = 8 - 26$ VDC HTL | Output signals A-track | Type of connection cable, radial, 1 m | Operating temperature range -20 °C to +85 °C | Hollow shaft diameter 40 mm | Protection IP66 | Attachment kit variant |

Baumer Thalheim GmbH & Co. KG

Hessenring 17, D-37269 Eschwege, Germany

Phone: +49 (0)5651 9239-0 · Fax: +49 (0)5651 9239-80 · www.baumerthalheim.com